



**SANTA ANA COLLEGE  
FACILITIES COMMITTEE MEETING  
FEBRUARY 18, 2020**



**SANTA ANA  
COLLEGE**



## PROJECTS

- ▶ Dunlap Hall Renovation - Completed
- ▶ Central Plant & Infrastructure - Completed
- ▶ Johnson Student Center & Demolition
- ▶ Science Center & Building J Demolition



# PROJECT UPDATE SANTA ANA COLLEGE SCIENCE CENTER & BUILDING J DEMOLITION

## Project Summary:

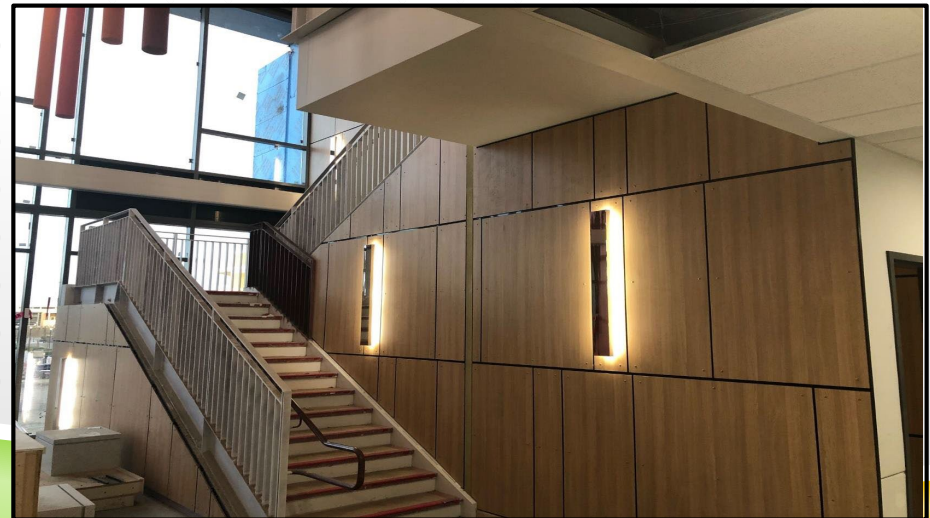
- ▶ Construction of a new three-story, 64,785 square foot science center and 880 square foot greenhouse
- ▶ Programs Include: Division Office, Faculty Offices, (2) Standard Classrooms, (1) Large Classroom, (1) Large Divisible Classroom, (1) Engineering Lab & Support Space, (6) Biology Labs & Support Space, (2) Geology Labs & Support Space, (5) Chemistry Labs & Support Space, (1) Physics Lab & Support Space, Student Collaboration Areas
- ▶ Project includes demolition of (3) J Buildings

## Current Status:

- ▶ New Installation of hardware for metal doors/wood doors
- ▶ New Exterior metal panels/caulking
- ▶ New Startup of MEP Systems
- ▶ New Bathroom partitions and restroom fixtures
- ▶ New Installation of overhead low voltage systems
- ▶ Target occupancy for 2020 Fall semester opening

## Budget:

- ▶ \$70.48 million





# PROJECT UPDATE SANTA ANA COLLEGE JOHNSON STUDENT CENTER

## Project Summary:

- ▶ Demolition of existing building
- ▶ Construction of a 63,642 square foot new Johnson Student Center
- ▶ Building Programs Include: Campus Store, Quick Stop/Café, DSPS, EOPS/CARE & CalWORKS, Student Business Office, SSSP/Upward Bound, Warehouse, Reprographics, Conference Center, Financial Aid, Student Placement, Health & Wellness Center, Office of Student Life, ASG, The Spot
- ▶ Site improvements include new hardscape, landscape and shade shelter around the Johnson Center as well as renovations in the West Plaza including new landscape, hardscape, a shade structure, and a campus serving kiosk (Express West)

## Current Status:

- ▶ New Completed installation of mechanical pipe and duct supports at the roof
- ▶ New Installation of insulation at the roof and installation of handrails and guardrails
- ▶ New Building exterior framing and building interior framing
- ▶ Target occupancy Spring 2021

## Budget:

- ▶ \$60 million
- ▶ \$59.44 million funded by Measure Q
- ▶ Note: The budget is currently deficient by \$557,874





# 2019-2020 SCHEDULED MAINTENANCE (SM20) PROJECTS

## **Santa Ana College**

State Allocation 2019                      \$229,136

► **Building T**





# SCHEDULED MAINTENANCE PROJECTS SANTA ANA COLLEGE

| PROJECT                                | STATUS   | ESTIMATED BUDGET |
|--|--|------------------|
| BR Library Restroom Upgrade (SM 18-19) | The project was submitted to DSA and approved. Bid and construction schedule are currently under review. | \$431,479        |



# CURRENT CAPITAL PROJECTS

## RUSSELL HALL REPLACEMENT (HEALTH SCIENCES BUILDING)

### Project Summary:

- ▶ Construction of a new 55,563 square foot Health Sciences Building to include Nursing, Occupational Therapy Technology, Emergency Medical Services, Pharmacy Technology, general classrooms and computer labs. The new building will be located south of the existing library and north of the new Science Center
- ▶ Demolition of existing Russell Hall Building
- ▶ The District will have to adhere to a strict state process and guidelines

### Current Status:

- ▶ New DSA approval anticipated Spring 2020
- ▶ New Prequalification of contractor applications is complete
- ▶ New Target construction start Fall/Winter 2020
- ▶ New Target occupancy Spring 2023
- ▶ New Demolition anticipated to start Winter 2023

### Budget:

- ▶ \$58.8 million
- ▶ \$20,475,000 state funded (estimated contribution)
- ▶ Budget under review





# RUSSELL HALL REPLACEMENT SECONDARY EFFECTS AND RELOCATIONS SANTA ANA COLLEGE

| PROJECT                      | STATUS   | ESTIMATED BUDGET      |
|------------------------------|--|-----------------------|
| Campus Entrance Improvements | The agreement for architectural services for Phase I Preliminary Schematic Design Phase was approved by the Board of Trustees on September 23, 2019. The location of Russell Hall after its demolition will need restoration at minimum. User group meetings are being planned.  | TBD<br>(Under Review) |
| Secondary Effect Relocations | The District met with the College on August 5, 2019 and again on August 29, 2019 to finalize the college's recommendation on the final locations for groups to move as a result of the secondary effects related to the demolition of Russell Hall. The agreement for architectural/engineering services was approved by the Board of Trustees on December 9, 2019. A kick-off meeting was held on December 16, 2019 and additional user group meetings are currently being scheduled. | TBD<br>(Under Review) |

# CURRENT CAPITAL PROJECTS

## SANTA ANA COLLEGE

| PROJECT                            | STATUS  | ESTIMATED BUDGET |
|------------------------------------|---|------------------|
| Campus Directory (Electronic)      | The architect provided final drawings to the District for review. The architect and electronic directory vendor are coordinating a mock-up demonstration at the campus. A schedule has yet to be determined.  | \$272,613        |
| Barrier Removal Signage/Wayfinding | The mock-up installation to test various sizes and colors of lettering has been completed on Dunlap Hall. Selection of color type and size has been made. The architect has completed final drawings and is planning to submit to DSA for a plan check review this month. | \$345,025        |
| Emergency Blue Phone & ADA POT     | The Notice of Completion was approved by the Board of Trustees on November 18, 2019.  | \$381,350        |
| Parking Ticket Kiosks              | This project will replace the existing parking ticket kiosks to make them accessible and add an additional parking ticket kiosk. There will be a total of 12 kiosks on campus. The project is in the construction document phase.   | TBD              |



## CURRENT CAPITAL PROJECTS SANTA ANA COLLEGE

| PROJECT         | STATUS  | ESTIMATED BUDGET |
|-----------------|---|------------------|
| ITS Copper Wire | With the completion of the Central Plant project, new twisted pair copper wire lines (25 pairs) were installed to replace the old lines as part of the infrastructure improvements across campus. These copper lines were replaced and then terminated (landed) at 22 buildings on campus at their respective Intermediate Distribution Frame (IDF) rooms or the Building Distribution Frame (BDF) rooms associated with the buildings. The new copper lines provide connectivity to support service for telephone voice systems, emergency telephone lines, elevator telephones, and fax machines. It is the intent of ITS to now abandon the old lines and utilize the new copper lines. The new copper lines are installed at each major building on the campus which are then directly connected back to the campus's main computer communication center located at the Chavez Building (A). The project has been submitted to DSA for a plan check review. | \$474,339        |



## CURRENT PROJECTS DISTRICT-WIDE

| PROJECT  | STATUS  | ESTIMATED BUDGET |
|--|---|------------------|
| District-Wide<br>Emergency Blue<br>Phone & ADA Path<br>of Travel | The projects at SCC, SAC, DMC and OCSRTA have been completed.<br>DO and CEC have yet to be scheduled. | \$1.9 Million    |



# CURRENT PROJECTS DISTRICT-WIDE

| PROJECT   | STATUS  | ESTIMATED BUDGET |
|---|---|------------------|
| District-Wide Electronic Access Control and New Key Distribution Procedures | <p>The District intends to undertake several test pilots for a variety of building conditions and door types to retrofit adding or upgrading electronic access control features, changing out mechanical locks to the new lock standard, and to test pilot the new draft of the Key Distribution Procedures and Guidelines developed by the District Working Group per Administrative Regulation 3501.</p> <p>Test Pilot locations:</p> <ul style="list-style-type: none"> <li>• Santa Ana College: new Science Center and Dunlap Hall</li> <li>• Santa Ana College Centennial Education Center (mechanical key change only)</li> <li>• Santiago Canyon College: Humanities Building and Building D</li> <li>• Digital Media Center</li> <li>• District Office</li> </ul> <p>The electronic access control system includes adding new access control hardware and readers at select locations across doors and integrating equipment into a new district-wide access control platform (which is planned to be installed with the new SAC Science Center). The test pilot is anticipated to last at minimum one year, while concurrently, the District works to develop an implementation plan for all other buildings district-wide. The schedules for all buildings have yet to be determined. The District Office test pilot access control project is complete and the Santa Ana College Science Center is the next test pilot planned for Summer 2020.</p> <p>Several constituent groups and committee meetings have occurred to discuss the new Draft Key Distribution Procedures and the plan for re-keying of buildings as part of a district-wide retrofit program. Meetings have been held with both Academic Senates and Academic Deans, including the SCC Facilities Committee Meeting. The SAC Facilities Committee discussion and presentation is anticipated in February.</p> | TBD              |



# QUESTIONS